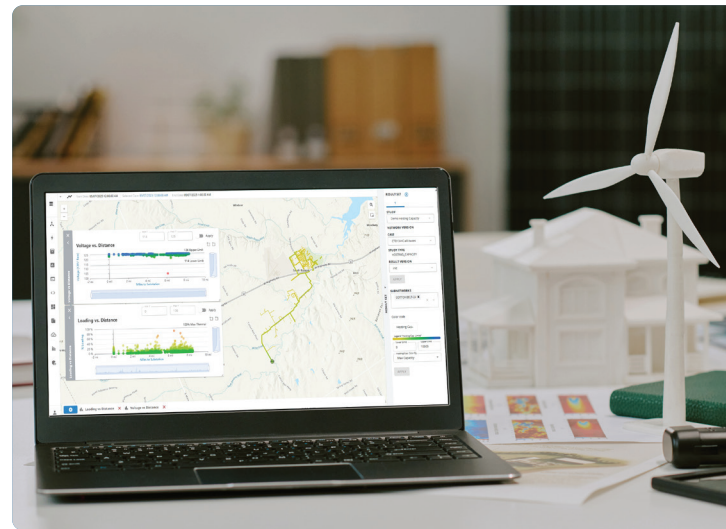


ENER-i Distribution Software

From EPE Software

Scalable Scenario Modeling and Analytics for Distribution Planning

De-risk the future state of your grid without changing your grid planning processes, workflows, or software. With ENER-i, utilities can conduct more advanced scenario modeling, use fewer engineering hours, and collaborate around intuitive analytics to make better informed investment decisions.



More Complexity, Less Time

Grid planning and modeling have become increasingly complex with the integration of Distributed Energy Resources (DERs), variable high-load facilities, and dynamic controls.

Traditional planning tools and processes cannot keep up with the growth and complexity demands of the modern grid. They require tedious manual simulation tuning and data loading, limiting both the number and type of future-state scenarios planning teams can model.

As an alternative, many utilities build and maintain costly custom software workarounds or invest in additional engineering efforts to expand planning efforts. Most can't afford the cost and disruption of modernizing their planning process and don't want to risk delays to upgrading their grid infrastructure.

The Solution: ENER-i by EPE

ENER-i is a cloud-based grid planning, modeling, and analytics tool designed to automate complex data loading and supercharge the latest grid modeling studies.

- Complements existing planning tools
- Run more planning scenarios, faster, for better results
- Designed and supported by EPE's power systems experts

Why ENER-i from EPE?

Key Features and Benefits

- **Seamlessly Integrate, Don't Replace:** ENER-i is designed to optimize your planning processes and integrate with your existing workflows and engineering analytics software like CYME, Synergi, or WindMil.
- **Trusted Model Conversion:** EPE's power systems experts meticulously map and validate your existing models and data to ensure accuracy, reliability, and consistency in the cloud.
- **Proven Tools:** Built on the trusted OpenDSS standard and integrated with ESRI for mapping.
- **Powerful Performance:** Rapid auto-scaling power flow engines combined with state-of-the-art visualizations.
- **Actionable Analytics:** Intuitive shared dashboards help your team interpret results and collaborate to make informed decisions with confidence.
- **Adaptable SaaS Software:** ENER-i offers ongoing new feature updates, custom automation and integrations through a RESTful Python API, and full SOC II compliance for data security.

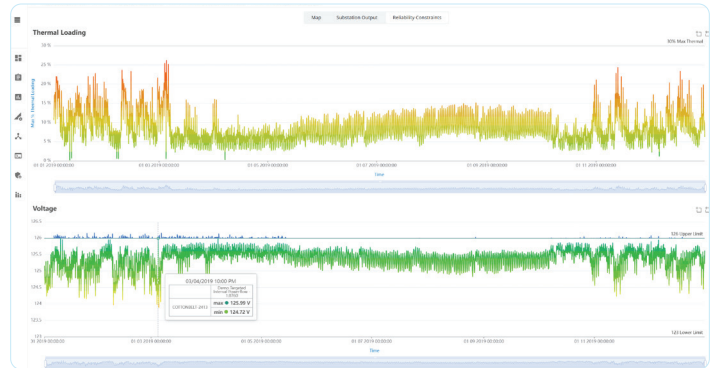
More Than Software, A Strategic Partnership

- **Backed by Experts:** EPE is the largest power-only consulting firm in North America. Supported by EPE's power system expertise, ENER-i consistently reflects new technologies, regulatory changes, and industry best practices.
- **Results You Can Trust:** Results will be accurate and stand up to regulatory scrutiny.
- **Professional Support On-Demand:** EPE's power systems engineers are ready to help navigate the path forward, from expert-led training to utility-specific solutions.

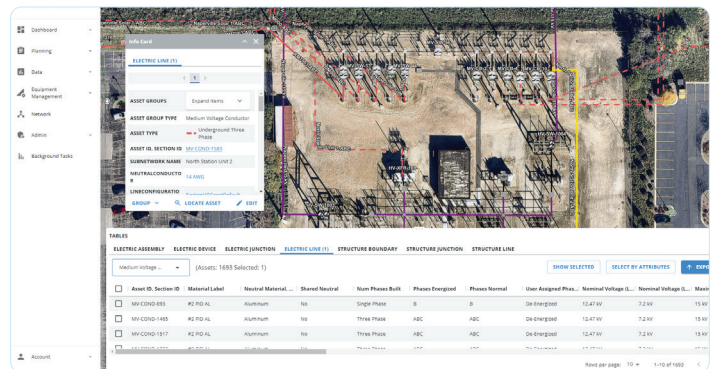
Unlock Engineering Time with Scalability and Automation

ENER-i automates the integration of critical utility data such as AMI, SCADA, and others, eliminating repetitive tasks so planning engineers can run thousands of parallel studies:

- Scenario modeling
- Hosting capacity analysis
- Time-series load flow
- Short circuit and fault analysis
- Advanced control modeling



Powerflow Results



GIS Network Map

De-Risk Tomorrow's Grid, Today

Visit epeconsulting.com/ener-i to schedule a demonstration and learn how ENER-i can transform your grid planning efforts.

